

**DIPLOMA EXAMINATION IN ENGINEERING/TECHNOLOGY/
MANAGEMENT/COMMERCIAL PRACTICE — OCTOBER, 2018**

ARCHITECTURAL DRAWING - I

[Time : 3 hours

(Maximum marks : 100)

[Note:—1. Drawing shall be neat and fully dimensioned.

2. Missing data can be suitably assumed.
3. One butter sheet and one tracing paper of size 75cm×50cm are to be supplied.
4. Figure on 2nd page.]

PART — A

(Maximum marks : 10)

Marks

I Answer *all* questions in one or two sentences. Each question carries 2 marks.

1. List any four line types used in drafting plans.
2. Define orthographic projection.
3. What is a sunshade ?
4. Mention the optimum heights of a (a) Stool (b) Writing table.
5. Differentiate between enlarging scale and reducing scale.

(5×2 = 10)

PART — B

II Draw the plan, elevation and section of a dining table of size 150 × 90 × 75.

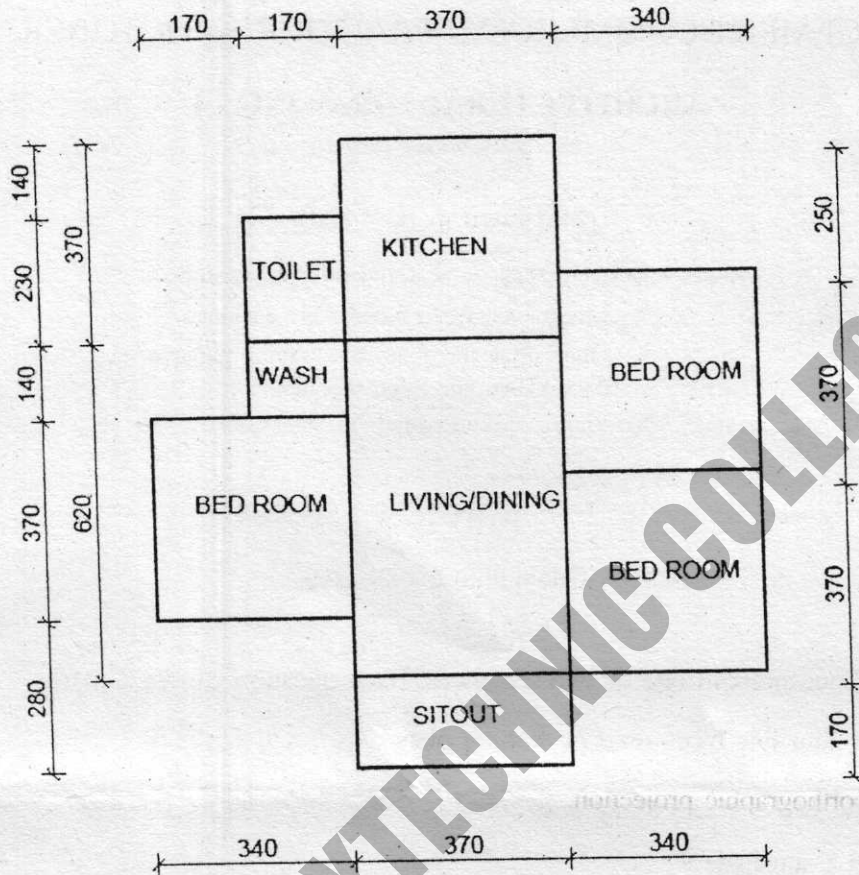
20

PART — C

III Develop the given center line into a plan and draw its elevation and section. Thickness of wall may be 20cm.

Drawing shall include :

Plan — 1:100	30
Elevation — 1:100	15
Section —1:100	25



ALL DIMENSIONS ARE IN CMS

WALL THICKNESS 20 CM

LINE PLAN OF A RESIDENCE

MA'DIN POLYTECHNIC COLLEGE