

**DIPLOMA EXAMINATION IN ENGINEERING/TECHNOLOGY/
MANAGEMENT/COMMERCIAL PRACTICE — OCTOBER, 2017**

ARCHITECTURAL DRAWING — III

[Time : 4 hours

(Maximum marks : 100).

- [Note:— 1. Drawings shall be neat and fully dimensioned.
2. Missing data can be suitably assumed.
3. Two Nos. A1 size Tracing sheets (drawing sheets) and butter sheets for rough work are to be supplied.]

PART — A

(Maximum marks : 10)

Marks

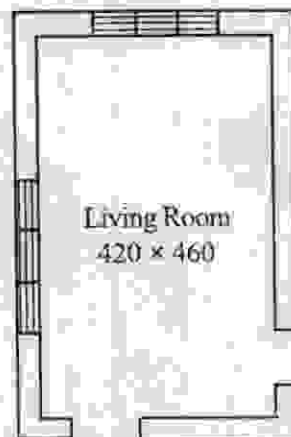
I Answer *all* questions in one or two sentences. Each question carries 2 marks.

1. What is a site plan ?
2. Define dwelling unit.
3. What is meant by head room ?
4. Define building line.
5. Write the min. parking space required for motor car and two wheeler. (5×2 = 10)

PART — B

(Maximum marks : 20)

II Draw the interior layout of the given plan.



Draw the Furniture Layout in 1: 50 Scale

PART — C

(Maximum marks : 70)

III Design a college auditorium to accommodate 750 persons with the following requirements.

Lobby, waiting and reception — 50 sq.m

Office space — 15 sq.m

Seating space for 750 chairs

Stage, green rooms and toilets — 150 sq.m

Porch, toilets, washes area, parking area etc. may be provided as stipulated in KMBR.

Site measures 120 m × 100 m with a 12 m wide road on the North side.

Plan — 1:100

35

Elevation — 1:100

15

Section — 1:100

20

MA'DIN POLYTECHNIC COLLEGE